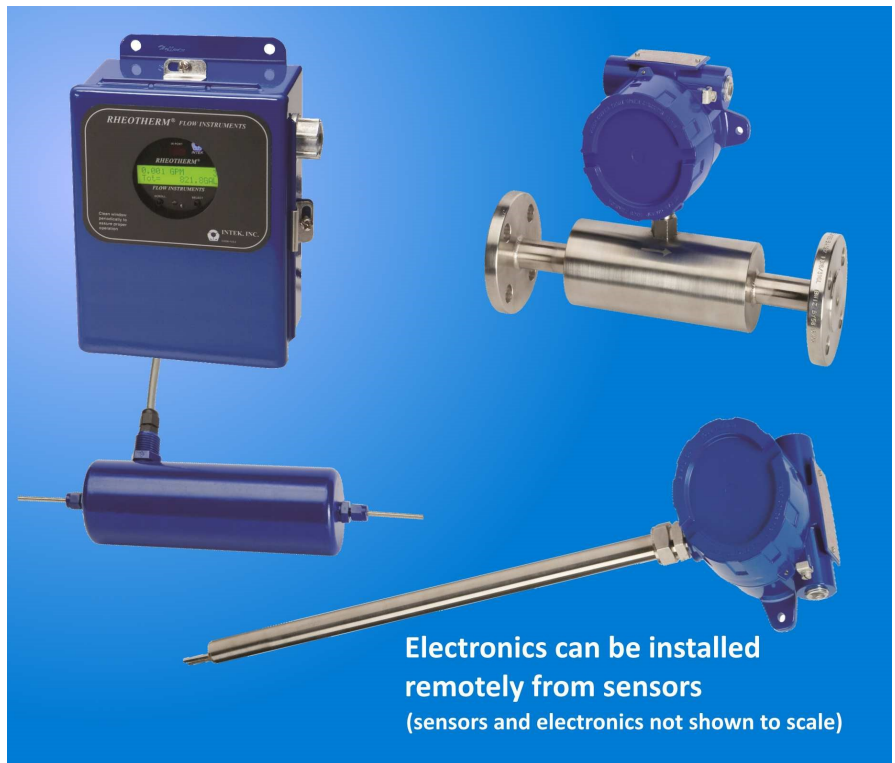


**RHEOTHERM®**  
FLOW INSTRUMENTS

# Model 210 Flow Meter

**Trusted Rheotherm precision with added versatility, functionality and safety**

- Precision low flow meters with signal processing electronics integrally mounted to the sensor, installable at the process site
- Capable of measuring liquid as well as gas flows
- Measures liquid flows as low as one gallon per year and gases as low as 30 sccm
- Chemically compatible with most process liquids and gases
- Little or no maintenance, no moving parts, high reliability
- Extended temperature compensation for reliable flow measurement under a wide range of process conditions
- Self diagnostics
- Available with inline sensors and insertion probe sensors
- Optional remote electronics configuration
- CE marked (24 Vdc models only)
- FM and cFM approved options for hazardous locations (see reverse)



## Your Process Flow Partner

For over 40 years, Intek's Rheotherm flow meters have proven to be a robust and accurate solution for industrial and aerospace flow measurement applications. A low maintenance design with no moving parts and excellent chemical compatibility leads to a long equipment life—up to 20 years is common. The unobstructed flow path of the in-line TU and TUL style sensors minimizes pressure drop across the meter and is suitable for high pressure applications. Quality is assured with Intek's ISO-9001:2015 certified quality assurance program.

### Model 210 Features

- Advanced temperature compensation
- Multiple calibration data storage: 4 liquid or gas calibrations at 4 temperatures each
- Wide turndown capability: 10:1 standard, 200:1 extended, up to 2000:1 with multiple ranges
- Enhanced self diagnostics
- Field adjustable calibration

### Applications

- Low flow: liquids as low as 10 cc/day, and gases as low as 30 sccm
- Gas mass, volume, or velocity flow rates in ducts: 50 sfp and higher
- Homogeneous slurries
- Hazardous environment options:
  - FM approved intrinsically safe sensors with remote electronics\*
  - FM and cFM approved explosion-proof integral design\*\*
- Choice of fittings and cleaning options for use in sanitary or high purity applications
- Choice of wetted material for chemical compatibility includes stainless steel, Hastelloy C®, Monel®, Super Duplex and other alloys

\*Class I, Division 1, Groups A, B, C, and D

Class I, Zone 1, IIB+H2 (US Only)

Class II, Division 1, Groups E, F, and G

Class III, Division 1

ATEX & IECEx options available with ISB

\*\* Same as above, except Group A is not included

### Model 210 Specifications

#### Line Size

- 1/16 OD or larger

#### Response Time

- 1 second

#### Time Constant (63% of flow change)

- 3 to 5 seconds (typical)

#### Repeatability

- $\pm 0.5\%$  of reading (typical)

#### Accuracy

- $\pm 1\%$  of reading (typical)

#### Enclosure

- Standard: NEMA 4X/NEMA 7
- Optional: NEMA 4/NEMA 7/Panel Mount/Lab (remote electronics)

#### Display

- "Blind" (no display)
- 2 x 16 backlit LCD displays all of the following:
  - Mass/volume flow rate
  - Temperature in °C or °F
  - Total accumulated flow

#### Output

- Standard: 4/20 mA (flow rate only)
- Optional:
  - 0-10 Vdc or 0-5 Vdc (flow rate, temperature)
  - Pulse (open collector, 5 Vdc, remote electronics only)
  - SPDT switch (remote electronics only)
  - 4/20mA (temperature, remote electronics only)

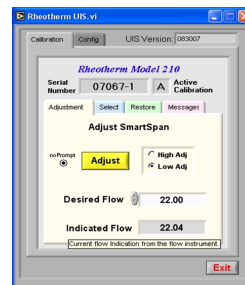
#### Input Power

- Standard: 24 Vdc
- Optional: 85-250 Vac (remote electronics only)

### Multiple Calibrations

Up to four independent calibrations can be stored. These can be selected for changes of fluid or to cover additional flow ranges, while maintaining high accuracy. Channel A is the primary factory calibration, with additional factory or user calibrations stored in channels B, C and D.

### Field Adjustment



Calibration performed on the actual fluid typically does not require adjustment. The Model 210's display interface or a Windows based PC connected to the meter via an adapter cable allow for field adjustments if required. A two-point Hi/Lo adjustment automatically adjusts the entire calibration. Factory calibration is easily recoverable.

### Self Diagnostics

Fault detection is per NAMUR NE 43 using 4/20 mA output.

### Configurations

The Model 210 is available as an integrated one-piece design or with the electronics mounted remotely (Model 210R) from the sensor up to 200 feet away.

●販売代理店 (お問い合わせ・お見積り依頼はこちら)

株式会社 クローネ | 私達は機能・品質・デザインを追求します。  
<http://www.krone.co.jp>

■本 社 : 〒124-0023 東京都葛飾区東新小岩3丁目9番6号  
TEL: (03) 3695-5431 / FAX: (03) 3695-5698  
■大阪支店 : 〒530-0054 大阪市北区南森町2-2-9 (南森町八千代ビル7F)  
TEL: (06) 6361-4831 / FAX: (06) 6361-9360