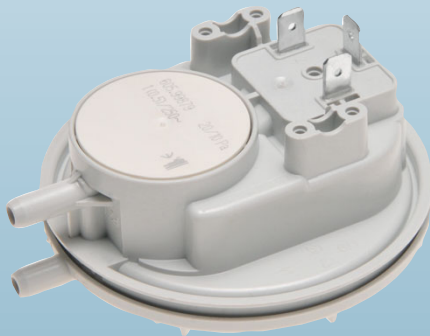




Mechanical pressure switch



Pressure range 20 ... 400 Pa

Huba Control

OEM Relative and differential pressure switch

Type 605

Type 605 pressure switches are specially developed for use in gas fired heating systems.

There are more than 40 million switches in use worldwide. Produced on a fully automated production line.

High setting accuracy and repeatability, combined with excellent reliability characterise a quality of switch above the industry norm.

- + Fitting of the switch – Fast mounting with snap bracket system
- + Adjusting security
- + High contact strength (typically 10 cN)
 - Essentially less susceptibility to pollution of contact
- + Roll operation of contact surface
 - Less sensitive to contact pollution through self cleaning effect
- + Diaphragm design / material
 - Better long term stability achieved through the use of a 2 component silicon diaphragm.
 - Unique trapezoid diaphragm design provides for a better contact release and therefore a more accurate switching point

Technical overview

Pressure range		
Relative and differential		20 ... 400 Pa ¹⁾
Operating conditions		
Medium		Air and neutral gases
Temperature ²⁾	Medium / ambient	-30 ... +110 °C
	Storage	-30 ... +110 °C
Tolerable overload on one side	< +85 °C	5000 Pa
	+85 ... +110 °C	1500 Pa
Smallest turn on pressure of 20 Pa ³⁾		Smallest switching differential 8 Pa
Materials in contact with the medium		
Sensor		Silicone LSR
Case		PC Lexan 500R ⁴⁾
Electrical overview		
Switching load		See Nominal loading limits
Contact system	Changeover switch	
Service life	Mechanically	> 10 ⁶ switching cycles
Protection standard		
Not mounted		IP 00
With contact safety guard		IP 30
With cover, without seal		IP 54
With cover and seal		IP 65
Reproducibility		
Between		± 1 Pa
Electrical connection		
AMP connector ⁵⁾		6.3 mm
		4.8 mm
Pressure connections		
Pipe		Ø 6.2 mm
Orifice installed for damping pulsating pressure at P1, P2 (option)		
Mounting instructions		
Installation arrangement		Please indicate installation arrangement
Mounting		With several brackets
		Fastening clip for quick mounting
Tests / Admissions		
UL		MFHX2/8 or XAAK2/8
DVGW		acc. to DIN EN 1854
EC type examination certificate		CE-0085AP0974
Low voltage directive		2014/35/EU
Gas appliance directive		2016/426/EU
Weight		
Without accessories		~ 60 g
Packaging		
Multiple packaging in cardboard		300 pieces
		1200 pieces (4 boxes per pallet)

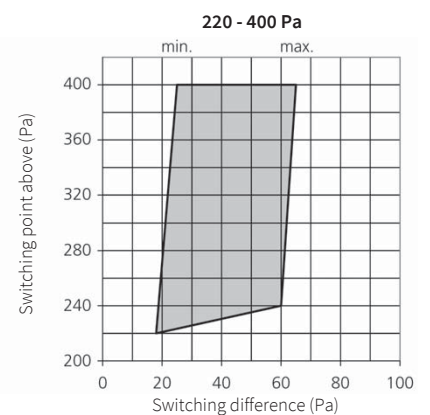
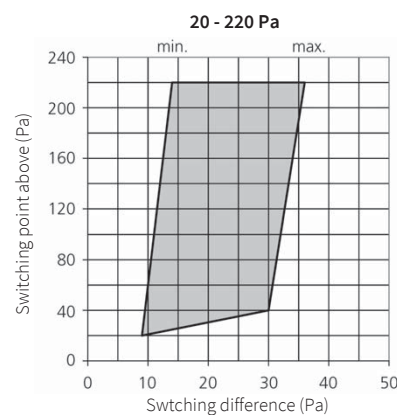
Adjustable switching differences

Switching difference adjustment only inside shaded area:

Example: Upper switching point 220 pascal.
Switching difference between 14 and 36 pascal.

Example: Upper switching point 40 pascal.
Switching difference between 9 and 30 pascal.

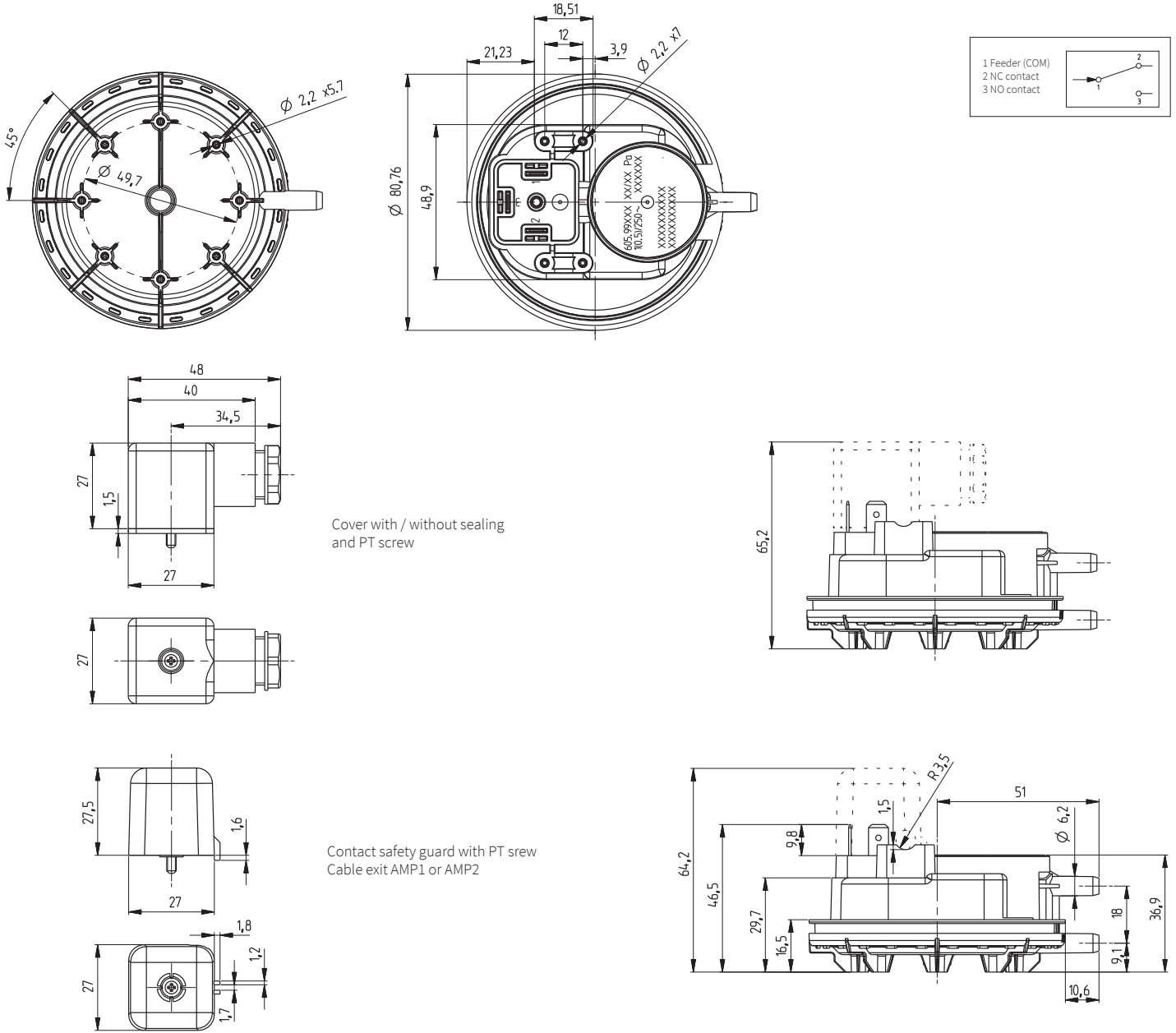
Example: Upper switching point 20 pascal,
smallest switching difference 8 pascal.



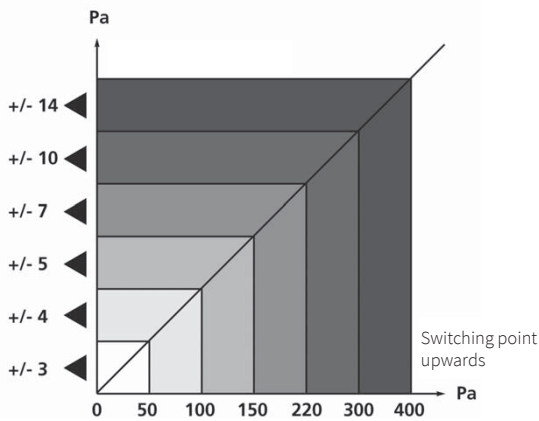
¹⁾ Higher pressures on request
⁴⁾ Fiberglass reinforced plastic 10% GF

²⁾ Higher temperatures on request
⁵⁾ According to DIN 46244

³⁾ Switching differential is factory-set

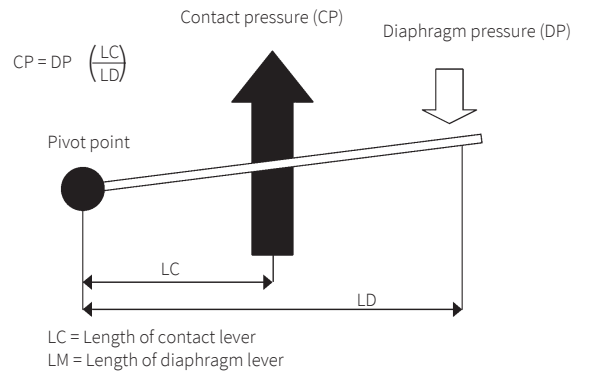


Tolerance of switching point



The principle of high contact pressure

Simplified representation of the new DPS 605 contact system. The high contact pressure results from the optimized length ratios of LC and LD.



Accessories

Order number

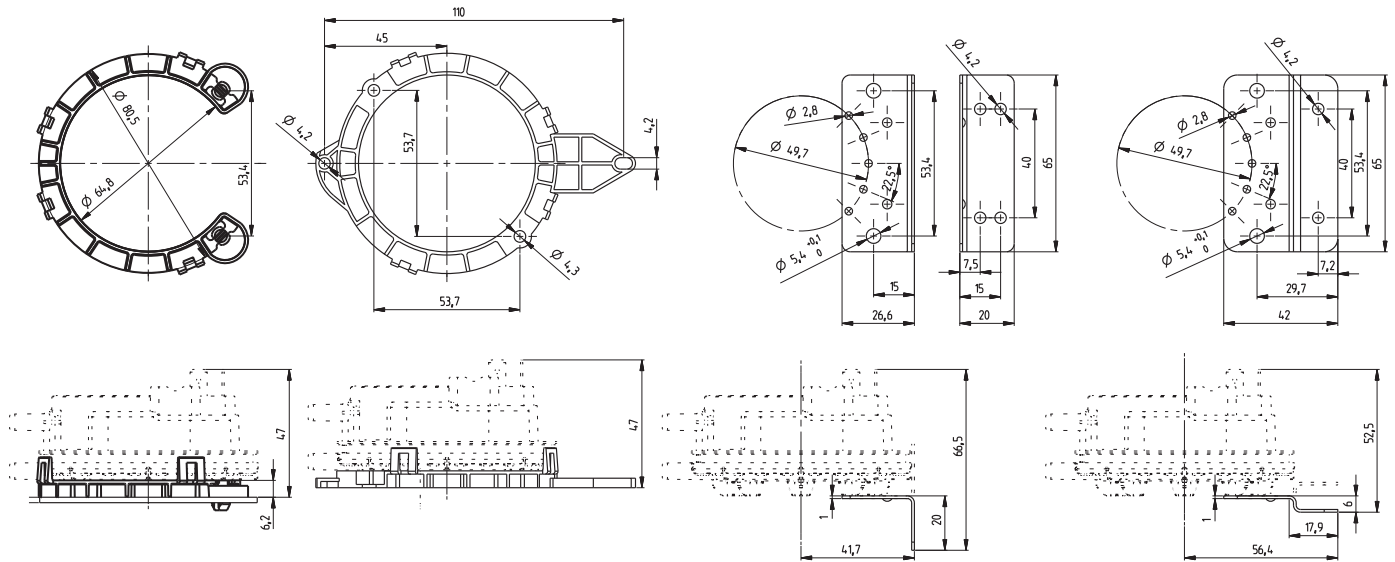
Cover with seal and PT screw		100306
Cover without seal and PT screw		100307
Cover with PT screw and cable output AMP-1		100297 + 102981 (PT screw)
Cover with PT screw and cable output AMP-2		100298 + 102981 (PT screw)
Fastening clip	Thickness of sheet metal 0.8 ... 1.1 mm	100294
	Thickness of sheet metal 1.8 ... 2.1 mm	100293
Fastening clip (with mounting holes)		106790
Bracket type A		100295
Bracket type B		100296
Mounting plate		106707
Mounting adaptor small		111223
Mounting adaptor large		112985
Calibration certificate (at factory set switching points)		104551

Fastening clip
(Dimensions in mounted state)

Fastening clip
(with mounting holes)

Bracket type A

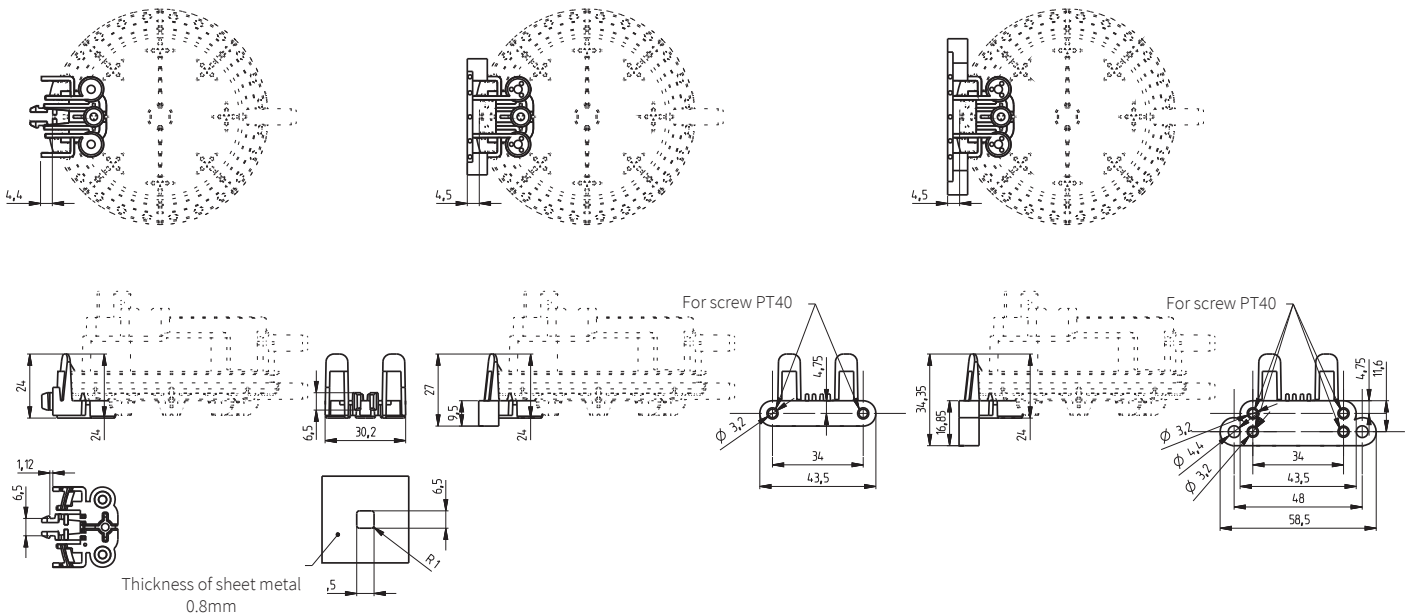
Bracket type B



Mounting plate

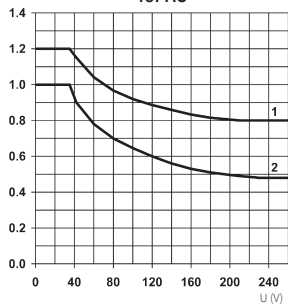
Mounting adaptor small

Mounting adaptor large



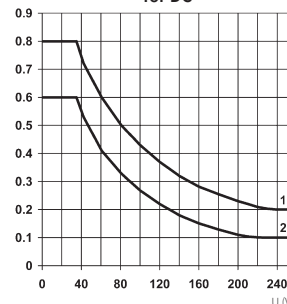
Nominal loading limits

for AC



1 = ohmic
2 = inductive ($\cos\phi$ 0.7)

for DC



1 = ohmic
2 = inductive
Can also be operated with TTL-load



株式会社 **クローネ**

■カタログに掲載してある製品の色は印刷インキの関係上、実際とは異なる場合があります。
■製品のデザイン、仕様などは、予告なく変更する場合があります。

本 社：〒124-0023 東京都葛飾区東新小岩3丁目9番6号 TEL: (03) 3695-5431 / FAX: (03) 3695-5698
大阪支店：〒530-0054 大阪市北区南森町2-2-9(南森町八千代ビル7F) TEL: (06) 6361-4831 / FAX: (06) 6361-9360
e-mail: sales-tokyo@krone.co.jp URL: <https://www.krone.co.jp>

www.hubacontrol.com

