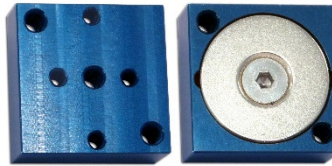


MODEL 2230



MODEL 2232



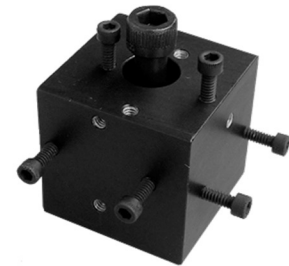
MODEL 2235



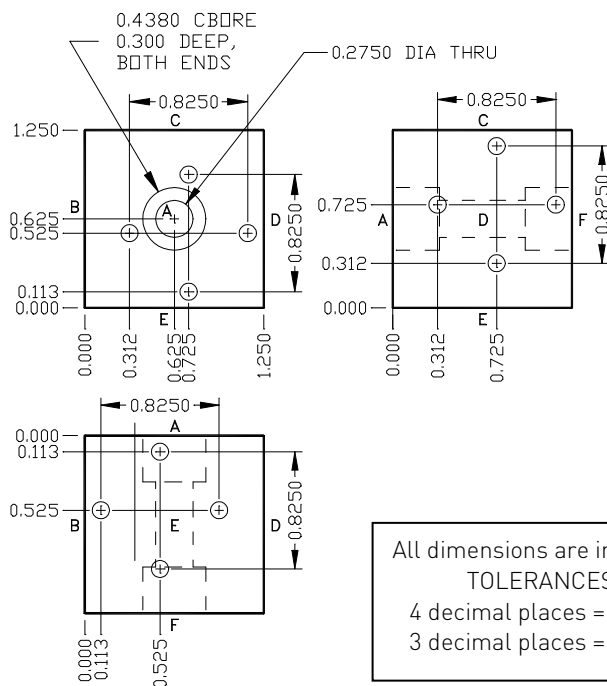
MODEL 2230-BLK

ORTHOGONAL MOUNTING BLOCK

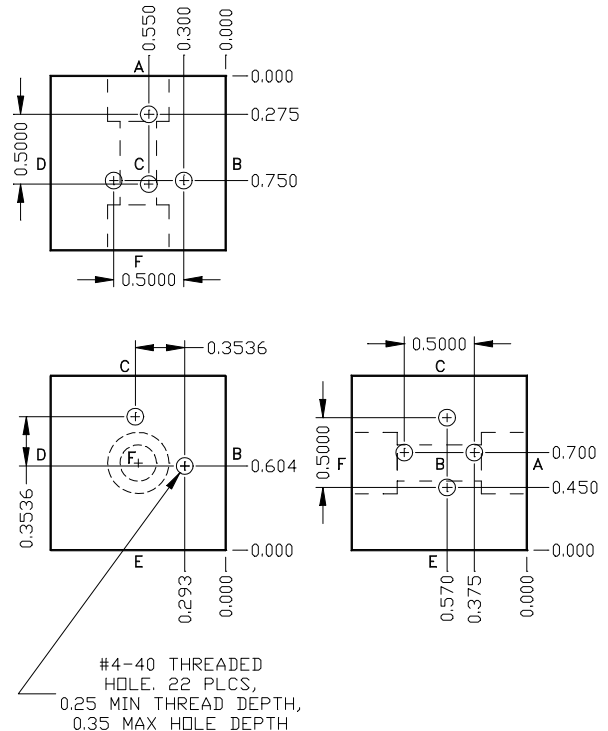
- Mounts up to three SDI single axis accelerometers modules
- Rugged black anodized aluminum
- Block mass = 79 grams
- Included Fasteners:
  - One (1) 1/4-20x1.5" UNC (9.5 grams, 6 lb-ft)
  - One (1) M6x1x35mm (9.0 grams, 5 lb-ft)
  - Six (6) #4-40x1/2" (0.7 grams each, 4.9 in-lbs)



The Model 2230-BLK orthogonal mounting block attaches up to three single axis accelerometer modules to create a user-defined, custom configuration. The 1.25" cube provides a lower cost alternative for achieving a two or three axis accelerometer compared to Silicon Designs' smaller triaxial accelerometer modules. It is precision machined from 6061-T6 aluminum and has a black anodized finish. It will accept any of Silicon Designs single axis accelerometers. The included fasteners are all hex socket head cap screws. The #4-40x1/2" screws are used for attaching your accelerometer(s) to the block. The 1/4-20 or M6x1 screw is used for attaching the block to your work surface.



All dimensions are in inches.  
TOLERANCES:  
4 decimal places = ±0.005  
3 decimal places = ±0.010

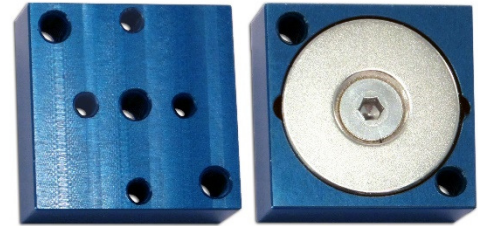


SPECIFICATIONS SUBJECT TO CHANGE WITHOUT NOTICE

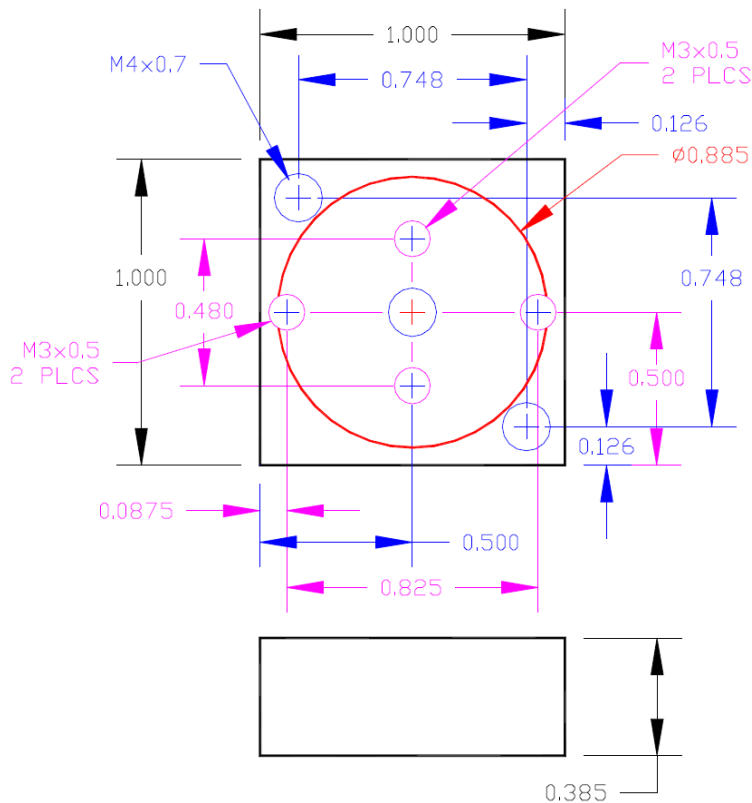
## MODEL 2232-BLK

## MAGNETIC MOUNTING BLOCK

- Magnetic mount for all SDI accelerometer modules
- 10 lbs / 4.6 KG pull force
- Rated for use up to +/-50G
- Low mass: 23 grams
- Included Fasteners:
  - M3 Metric mounting screw
  - M4 Metric mounting screw



The Model 2232 magnetic mount provides a convenient, temporary mounting for all SDI accelerometer modules onto a flat, ferrous metal surface. The mount has been evaluated for up to +/-50G, and performance is dependent on the quality of the mounting surface. When used with a triaxial SDI accelerometer module, the 2232 mount should only be used with relatively low accelerations in the X or Y direction. The mount is anodized and may damage painted surfaces.



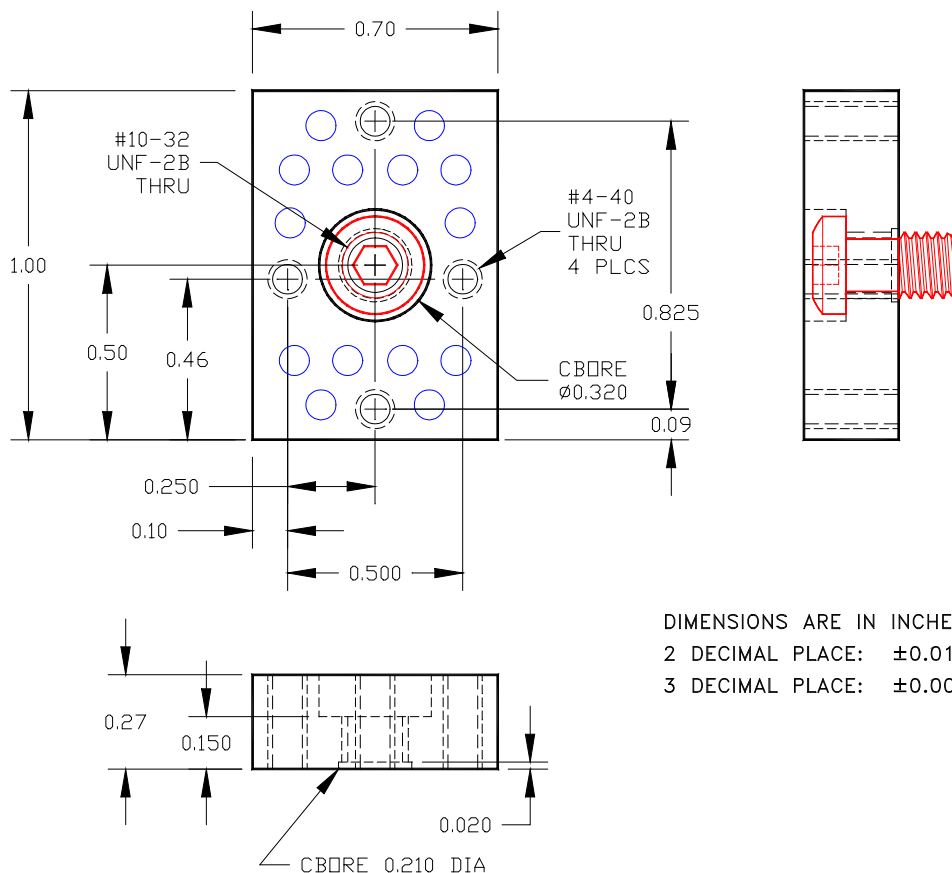
Model 2232 is shown above with an SDI Model 2276 accelerometer and 4PIN-CAB cable. Accelerometer and cable not included.

**MODEL 2235-BLK**
**SINGLE AXIS MOUNTING BLOCK**

- Mounts one SDI single axis accelerometer module
- Rugged Black Anodized Aluminum
- Size: 0.70 x 1.0 x 0.27 inches
- Block mass = 6.2 grams
- Fasteners Included:
  - One (1) #10-32 captive screw (1.4 grams)
  - Three (3) #4-40x1/2" (0.7 grams each)



The Model 2235-BLK single axis mounting block attaches one single axis SDI accelerometer modules using a stud mount configuration. The small block provides a low-cost mounting solution for applications with mounting options limited to a single screw. It is precision machined from 6061-T6 aluminum and has a black anodized finish. It will accept any of Silicon Designs single axis accelerometers. The included fasteners are all hex socket head cap screws. The #10-32 captive screw is used for attaching the block to your work surface. The #4-40x1/2" screws are used for attaching your accelerometer(s) to the block.



DIMENSIONS ARE IN INCHES  
 2 DECIMAL PLACE: ±0.010 TOLERANCE  
 3 DECIMAL PLACE: ±0.005 TOLERANCE



株式会社 **クローネ**

■カタログに掲載してある製品の色は印刷インキの関係上、実際とは異なる場合があります。  
 ■製品のデザイン、仕様等などは、予告なく変更する場合があります。

本 社：〒124-0023 東京都葛飾区東新小岩3丁目9番6号 TEL: (03) 3695-5431 / FAX: (03) 3695-5698  
 大阪支店：〒530-0054 大阪市北区南森町2-2-9(南森町八千代ビル7F) TEL: (06) 6361-4831 / FAX: (06) 6361-9360  
 e-mail: sales-tokyo@krone.co.jp URL: https://www.krone.co.jp

SPECIFICATIONS SUBJECT TO CHANGE WITHOUT NOTICE