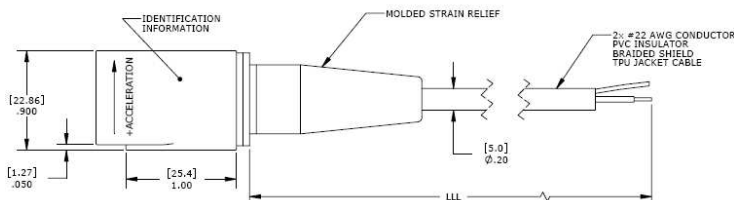
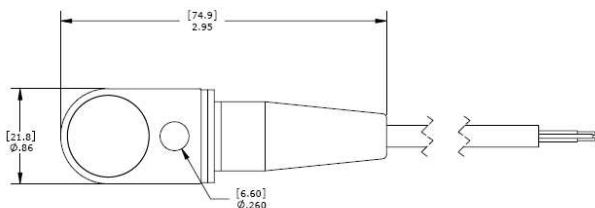
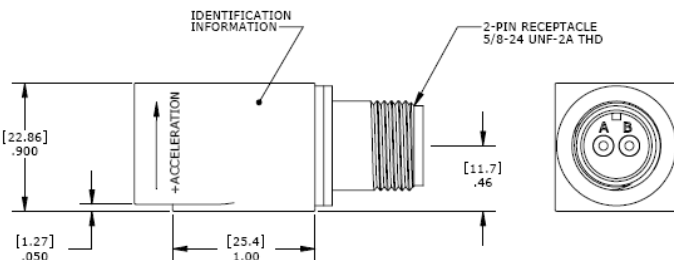
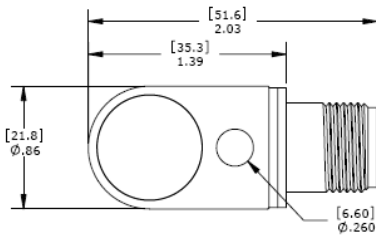




dimensions



MODEL 8021-01 & 8022-01 ACCELEROMETER

SPECIFICATIONS

- EMI Shielded Industrial Accelerometer
- 12kHz Bandwidth.
- -55°C to +125°C Operating Range.
- Side Exit Connector or Integral Cable

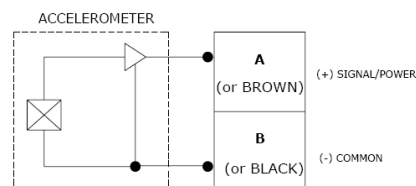
The Model 8021-01 & 8022-01 are internally shielded rugged IEPE accelerometers designed for harsh environments. The accelerometers are available in $\pm 10g$, $\pm 80g$ & $\pm 500g$ dynamic ranges and have a flat bandwidth up to greater than 12kHz. The model 8021-01 features a side exit MIL-C-5015 connector while the model 8022-01 features an integral cable. The units are hermetically sealed and are designed to operating in temperature ranges from -55°C to +125°C.

FEATURES

- $\pm 10g$, $\pm 80g$ & $\pm 500g$ Dynamic Ranges
- Wide bandwidth up to 12kHz
- Case Isolated, Internally Shielded
- Hermetically Sealed, Welded
- Annular Shear Mode
- Reverse Wiring Protection
- Stable Temperature Response

APPLICATIONS

- General Purpose
- Machine Monitoring
- Industrial Applications
- Harsh Environments
- Gearbox Monitoring



PERFORMANCE SPECIFICATIONS

All values are typical at +24°C, 80Hz and 4mA excitation unless otherwise stated. Measurement Specialties reserves the right to update and change these specifications without notice.

Parameters				Notes
DYNAMIC				
Range (g)	±10	±80	±500	
Sensitivity (mV/g)	500	100	10	±10%
Frequency Response (Hz)	1-4000	1-8000	1-10000	±10%
Frequency Response (Hz) ²	0.5-6000	0.5-12000	0.5-15000	±3dB
Natural Frequency (Hz)	28000	32000	42000	
Non-Linearity (%FSO)	±1	±1	±1	
Transverse Sensitivity (%)	<5	<5	<5	
Shock Limit (g)	5000	5000	5000	
Residual Noise (g RMS)	0.00005	0.0001	0.0003	
ELECTRICAL				
Compliance Voltage (Vdc)	18 to 30			See Note 1
Excitation Current (mA)	2 to 10			
Bias Voltage (Vdc)	8 to 12			Room Temperature
Output Impedance (Ω)	<100			
Insulation Resistance (MΩ)	>100			@100Vdc
Warm-up Time (sec)	<1			
Grounding	Case Isolated, Internally Shielded			
ENVIRONMENTAL				
Temperature Response (%)	±5			
Operating Temperature (°C)	-55 to +125			
Storage Temperature (°C)	-55 to +125			
PHYSICAL				
Sensing Element	Ceramic (shear mode)			
Case Material	Stainless Steel			
Weight (grams)	105			
Mounting Torque	24 lb-in (2.7 N-m)			

¹ For full dynamic range a minimum compliance voltage of 24Vdc is recommended

² LF option offers a low frequency response to 0.1Hz.

³ Contact factory for Hazardous Area Approval options

Calibration supplied:	CS-FREQ-0100	NIST Traceable Amplitude Calibration from 20Hz to ±10% Frequency Response Limit
Supplied accessories:	AC-A03735	¼-28 captive mounting screw
Optional accessories:	316A-XXX 318A-XXX	Cable Assembly, Straight (XXX designates length in inches, 10ft standard) Cable Assembly, 90 Degrees (XXX designates length in inches, 10ft standard)

The information in this sheet has been carefully reviewed and is believed to be accurate; however, no responsibility is assumed for inaccuracies. Furthermore, this information does not convey to the purchaser of such devices any license under the patent rights to the manufacturer. Measurement Specialties, Inc. reserves the right to make changes without further notice to any product herein. Measurement Specialties, Inc. makes no warranty, representation or guarantee regarding the suitability of its product for any particular purpose, nor does Measurement Specialties, Inc. assume any liability arising out of the application or use of any product or circuit and specifically disclaims any and all liability, including without limitation consequential or incidental damages. Typical parameters can and do vary in different applications. All operating parameters must be validated for each customer application by customer's technical experts. Measurement Specialties, Inc. does not convey any license under its patent rights nor the rights of others.

ORDERING INFORMATION

PART NUMBERING Model Number+Range

802XLF-01-GGG-CCC

| | | | Cable length (120 is 120 inches)

| | | | Range (080 is 80g)

| | | | Low frequency option, otherwise leave blank

| | | | Electrical Connection Option (1 for 2-pin connector, 2 for integral cable)

Example: 8021-01-080-120

Model 8021-01, 2-pin connector, 80g range, 10ft (120inch) cable length



株式会社 クローネ

■ カタログに掲載してある製品の色は印刷インキの関係上、実際とは異なる場合があります。
■ 製品のデザイン、仕様等などは、予告なく変更する場合があります。

本 社：〒124-0023 東京都葛飾区東新小岩3丁目9番6号 TEL: (03) 3695-5431 / FAX: (03) 3695-5698

大阪支店：〒530-0054 大阪市北区南森町2-2-9(南森町八千代ビルF) TEL: (06) 6361-4831 / FAX: (06) 6361-9360

e-mail: sales-tokyo@krone.co.jp URL: <https://www.krone.co.jp>

TE.com/sensorsolutions

Measurement Specialties, Inc., a TE Connectivity company.

Measurement Specialties, TE Connectivity, TE Connectivity (logo) and EVERY CONNECTION COUNTS are trademarks. All other logos, products and/or company names referred to herein might be trademarks of their respective owners.

The information given herein, including drawings, illustrations and schematics which are intended for illustration purposes only, is believed to be reliable. However, TE Connectivity makes no warranties as to its accuracy or completeness and disclaims any liability in connection with its use. TE Connectivity's obligations shall only be as set forth in TE Connectivity's Standard Terms and Conditions of Sale for this product and in no case will TE Connectivity be liable for any incidental, indirect or consequential damages arising out of the sale, resale, use or misuse of the product. Users of TE Connectivity products should make their own evaluation to determine the suitability of each such product for the specific application.

© 2015 TE Connectivity Ltd. family of companies All Rights Reserved.